

How to Build a PowerPoint Prototype

Setup

The easiest way to work with the prototyping graphic elements is to launch PowerPoint twice and display side by side as in the figure below:

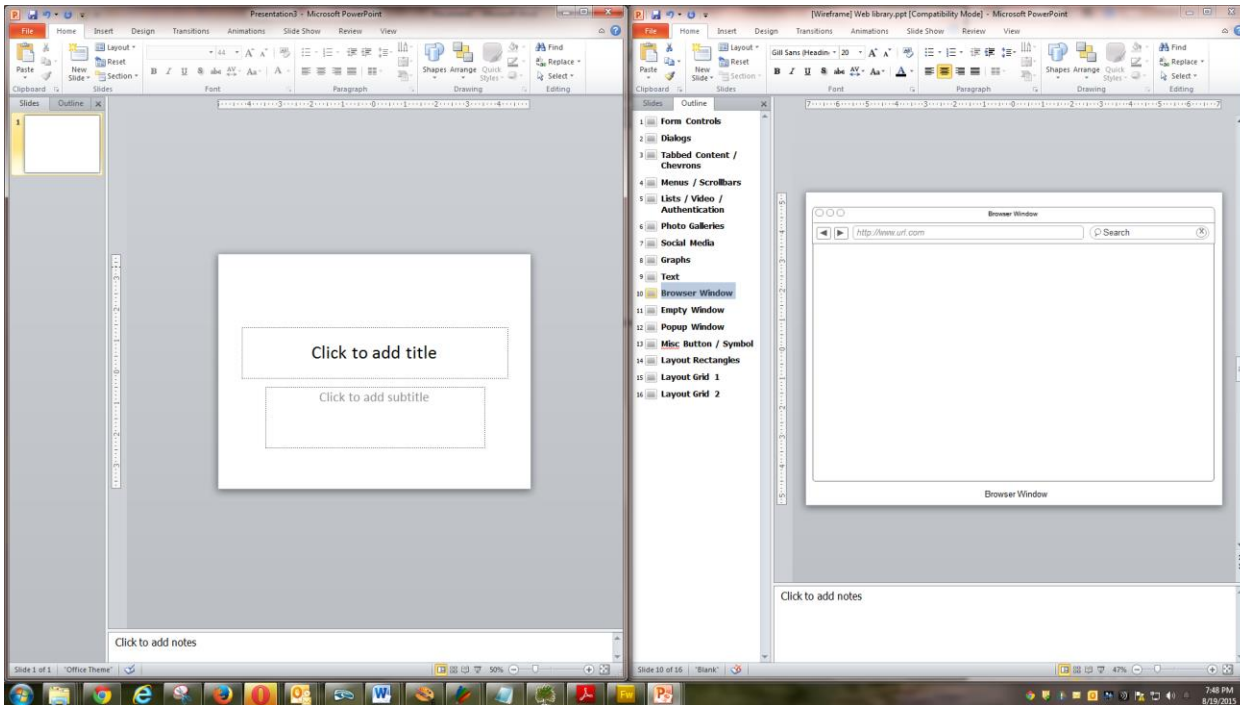


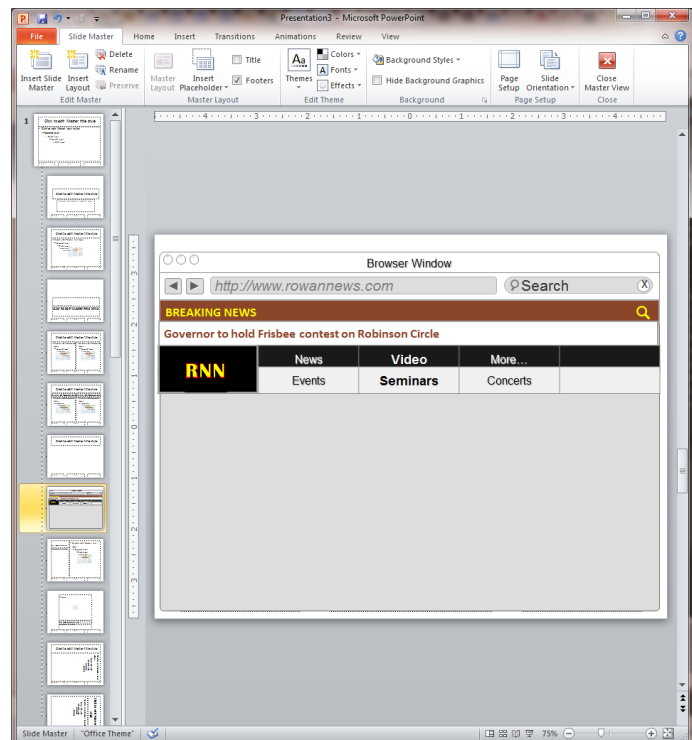
Figure 1 – The prototype PPT is on the left, and the PPT with graphics is on the right

In this example the PowerPoint document **Wireframe Web library.ppt** is opened, and the Browser Window slide was highlighted. Also, the PPT with the graphics is shown in Outline mode for improved navigation.

Develop a Master using a Wireframe

You will want the Slide Master to contain all of the common elements for each screen (View → Slide Master). Then copy the wireframes and all common elements to the **Blank Slide** master. Hint: The prototype elements work best when the color scheme of PowerPoint is changed to Greyscale. (Don't worry; you can always add color later.)

Close the Master when finished



Add Unique Elements for Each Page

Make slide one your home page, or the page from which you want to start the prototype. Use the Blank Page master that you created in the previous step.

Use the master for subsequent slides. Note use of Lorem Ipsum text which is common in web mockups.

Add hyperlinks

After all the pages are created, the last step is to build hyperlinks to emulate clicking on links.

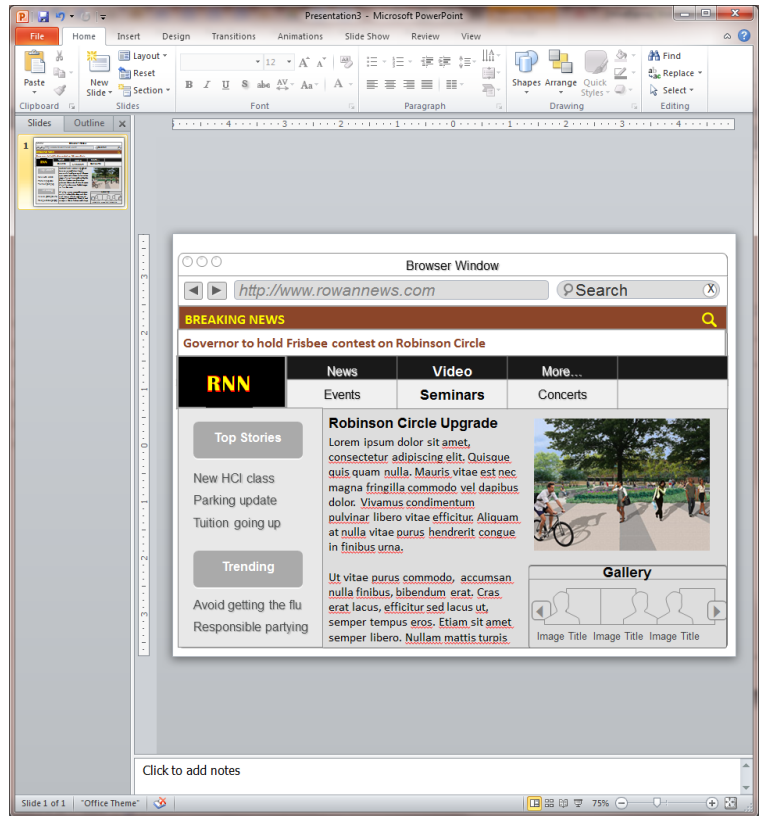


Figure 2 -- Slide 1, the home page

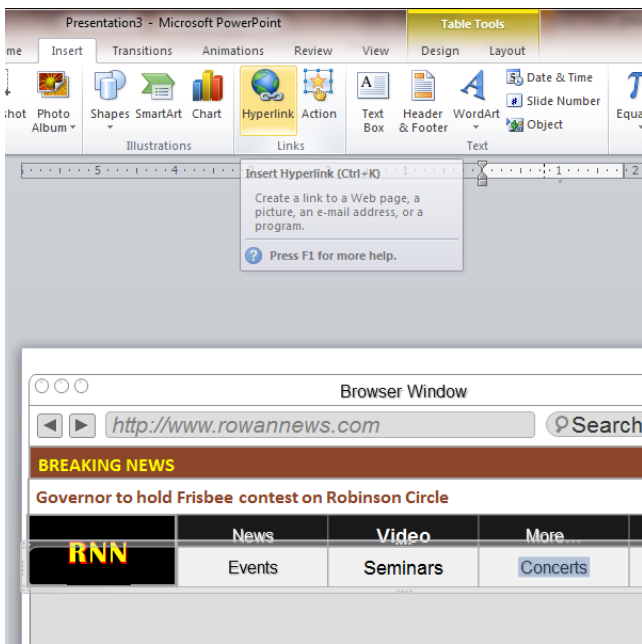


Figure 4 -- Adding a hyperlink to "Concerts"

In this case, the word Concerts was on the slide master

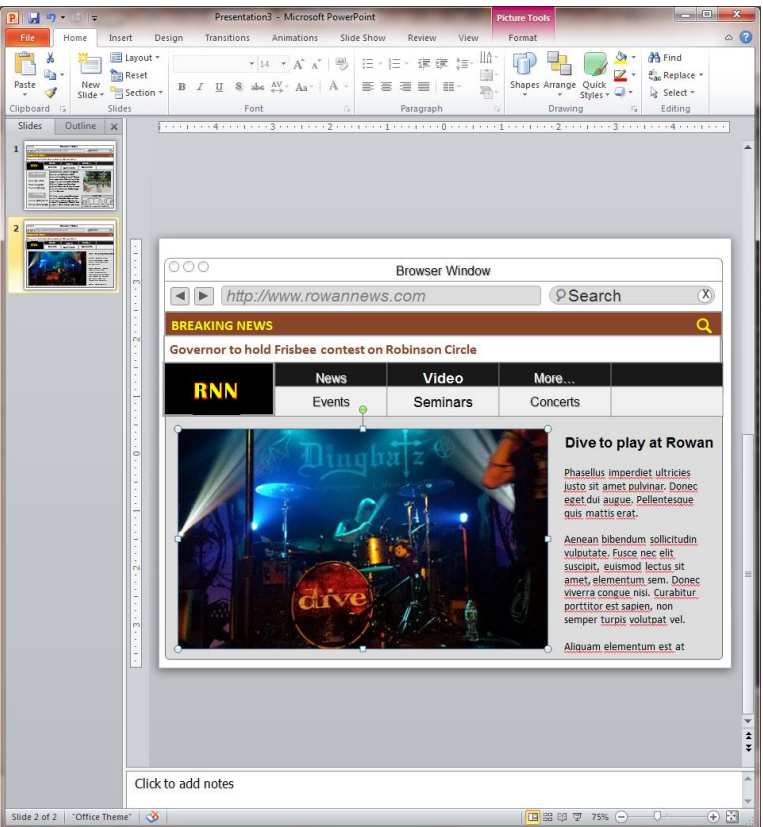


Figure 3 -- Slide 2, the concert page

so that is where the Hyperlink was added. The target of the link will be Slide 2 as shown above.

PowerPoint will underline text that has a hyperlink. If this does not appeal to you, check out the solution here:

<https://support.office.com/en-za/article/Remove-the-underline-from-hyperlink-text-28d22daa-7897-4091-9168-d6a12d523874>