

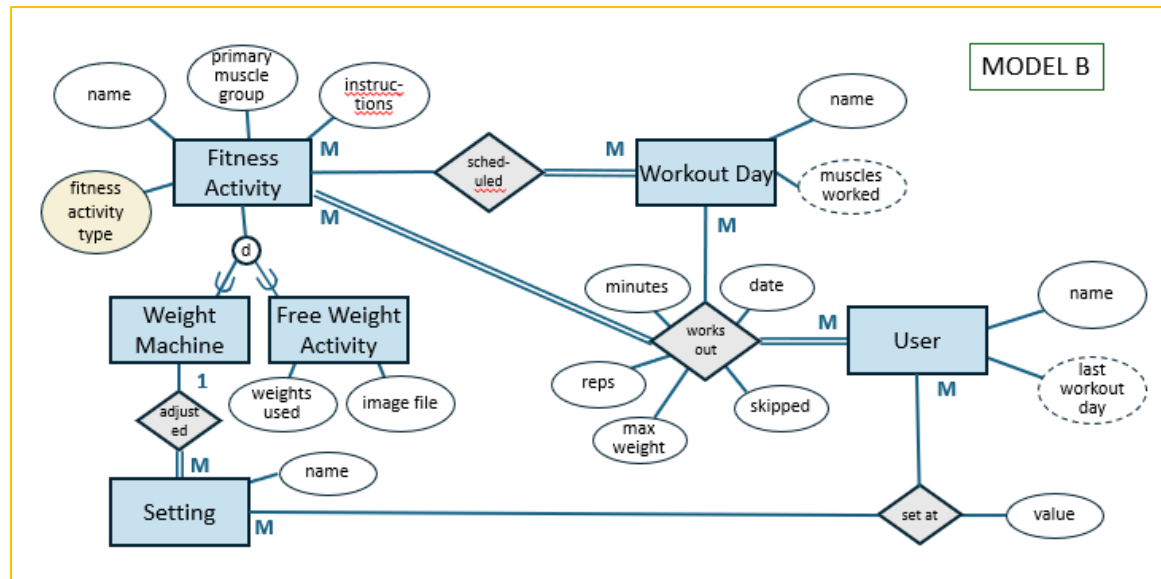
Fitness Application Project

SQL against a database which models inheritance

What you need to know for this assignment

- How to create stored procedures and functions
- How to access a database using PHP PDO
- How to write aggregate queries

This was your EER diagram, from which you built the physical data model:



Instructions:

1. Create a SQL query that lists all information about **Fitness Activities** (must contain all information about each Fitness Activity, no matter what type of Fitness Activity it is) except for the activity instructions. Order the results alphabetically by the name of the fitness activity.
2. Create a SQL query that shows all the weight machine settings and their values that are specific to user Chris.
3. Not all weight machines have settings. Create a SQL query to show those machines that do not have any settings.

Please submit:

1. Each SQL query and its corresponding results.