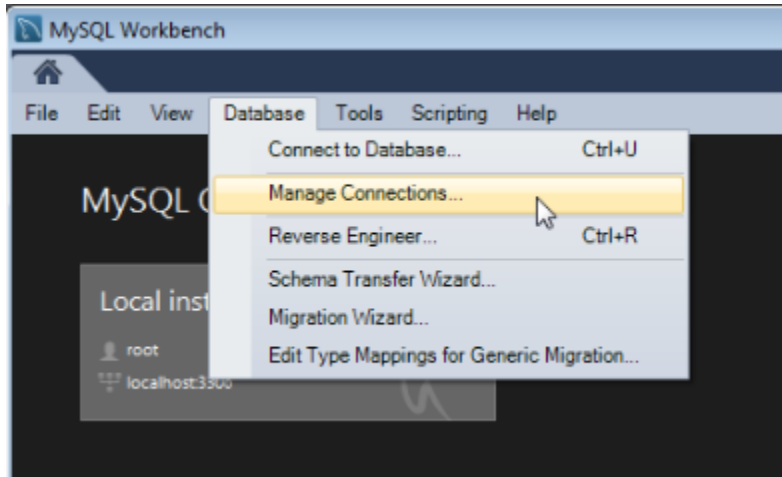


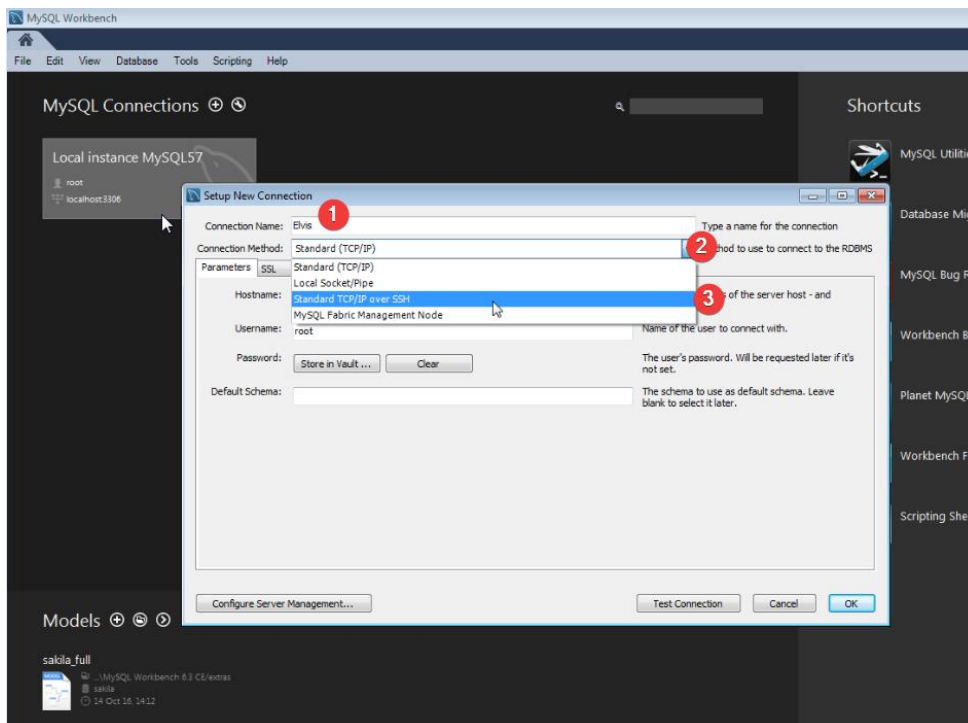
Database Systems: Theory and Programming

MySQL Workbench SSH Tunnel Configuration

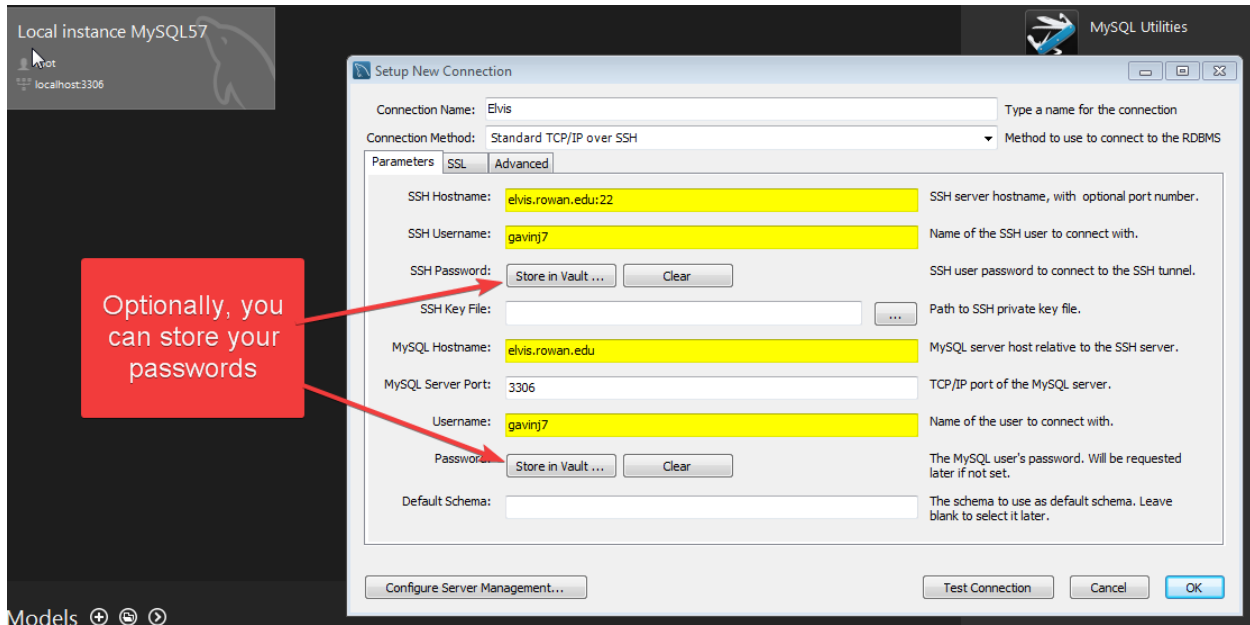
1. Open MySQL Workbench. Open the “Database” menu >> select “Manage Connections...”



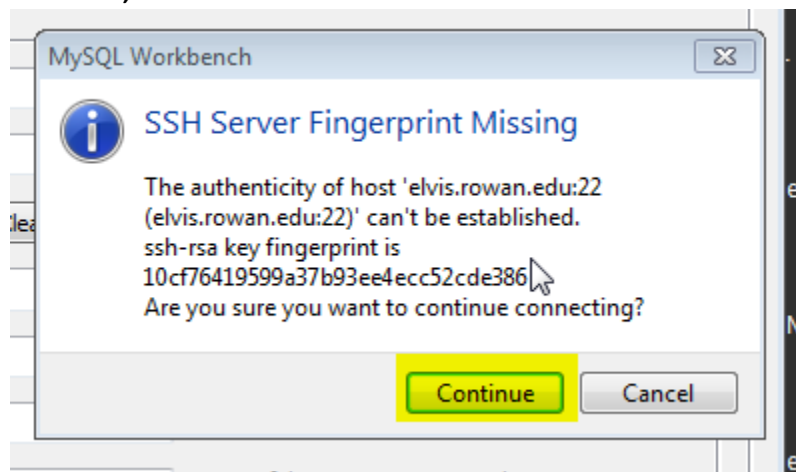
2. Enter a connection name. Click on the “Connection Method” dropdown. Select “Standard TCP/IP over SSH”.



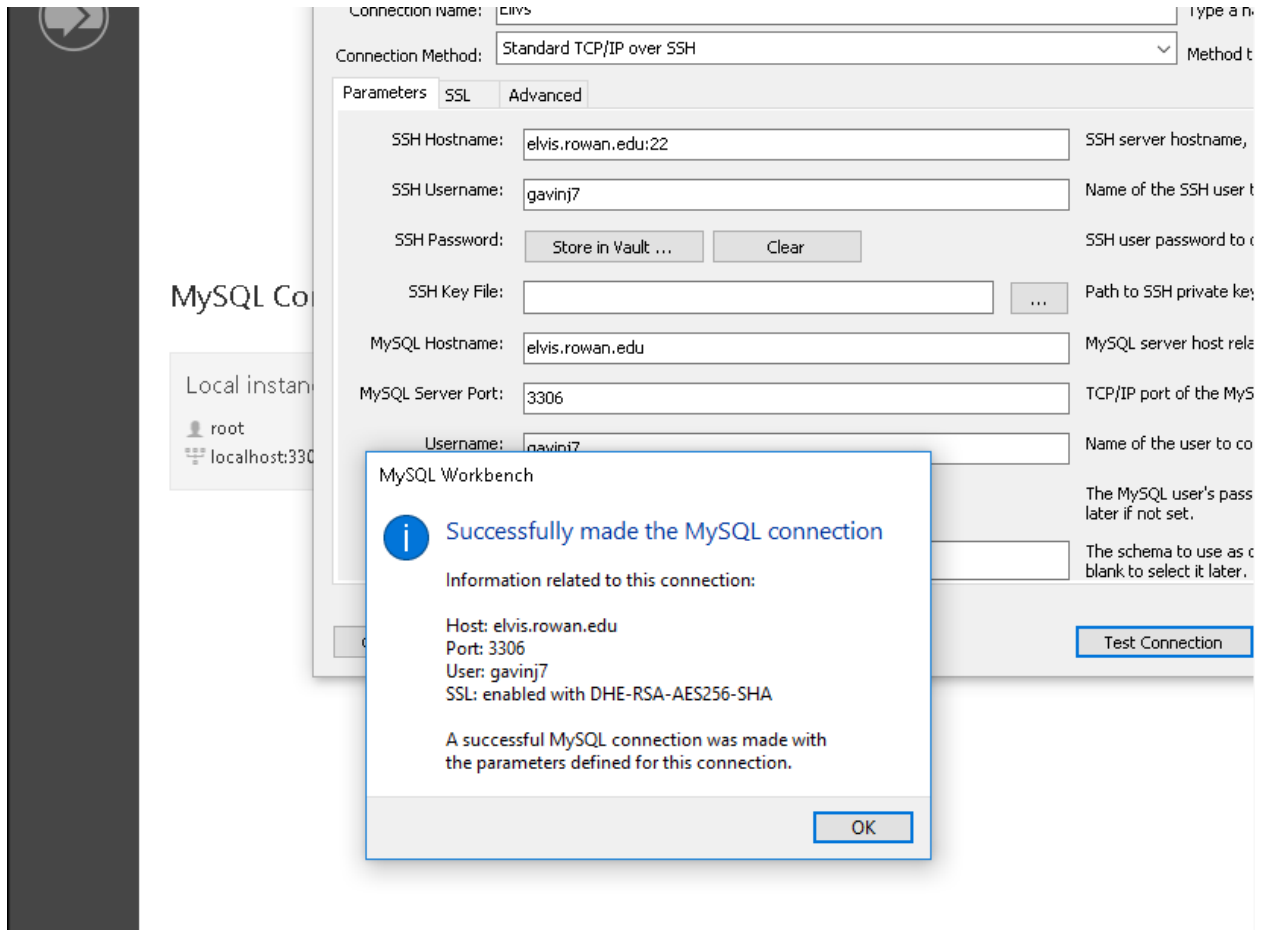
3. Enter the following information:
 - a. SSH Hostname: *elvis.rowan.edu:22*
 - b. SSH Username: **[Your Rowan Network Username]**
 - c. SSH Password: **[Your Rowan Network Password]**
 - d. MySQL Hostname: *elvis.rowan.edu*
 - e. Username: **[Username provided to Prof. Myers the first day of class]**
 - f. Password: **[Password provided to Prof. Myers the first day of class]**



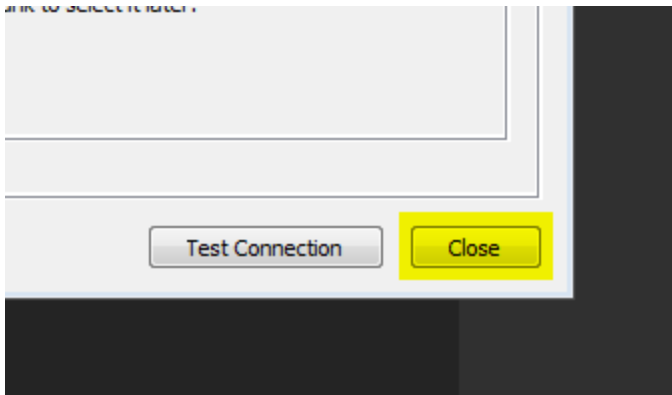
4. Click test connection.
 - a. **You may be prompted with a message similar to “SSH Fingerprint not recognized”, this is normal, click “Continue”.**



5. You should see the following confirmation

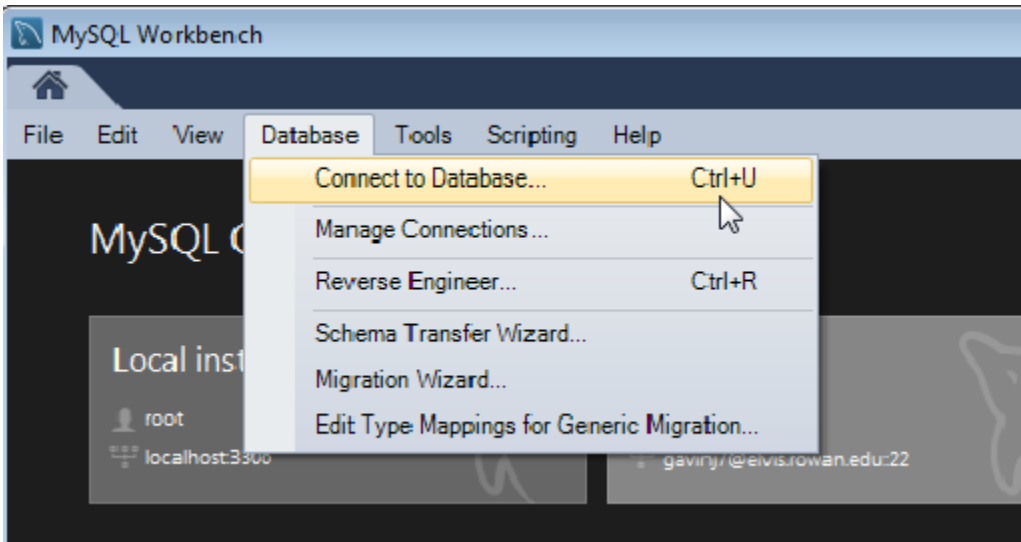


6. Click "OK" to close the test dialog; and then "Close" to close the "Manage Server Connections" window.



Connecting to the Database

1. Select the "Database" menu >> "Connect to Database..."



2. From the "Stored Connection" dropdown, select "Elvis". Click "OK".

